

User Guide

# **PowerMax (MX249001A)**

## **Ethernet software for use with the ML248xB and ML249xA Power Meter**

The Anritsu logo is located in the bottom right corner of the page. It consists of the word "Anritsu" in a bold, sans-serif font, with a stylized, slanted 'A'.

## **Terms of Product Usage**

By using the software the licensee is agreeing to the following conditions which should be read carefully prior to use.

### **Definition of Terms**

The software:

Includes computer software, media, and all other associated documentation (printed or on-line).

The documentation:

All documentation associated with the software whether printed or on-line.

### **Copyright**

Anritsu Limited owns the copyright to the software, which is licensed, not sold.

### **License**

The software is supplied with a multi-user license and is for use only with the equipment as defined in the associated documentation.

### **Limited Warranty**

The media on which you receive Anritsu Limited software are warranted not to fail to execute programming instructions, due to defects in materials and workmanship, for a period of 90 days from date of shipment, as evidenced by recipients or other documentation.

Anritsu Limited will, at its discretion, repair or replace software media that do not execute programming instructions if Anritsu Limited receives notice of such defects during the warranty period. Anritsu Limited does not warrant that the operation of the software shall be uninterrupted or error free.

Except as specified herein, Anritsu Limited make no warranties, express or implied, and specifically disclaims any warranty of merchantability or fitness for a particular purpose.

The customer's right to recover damages caused by fault or negligence on the part of Anritsu Limited shall be limited to the amount theretofore paid by the customer. Anritsu Limited will not be liable for damages resulting from loss of data, profits, use of products, or incidental or consequential damages, even if advised of the possibility thereof.

The aforementioned limitation of the liability of Anritsu Limited will apply regardless of the form or action, whether in contract or tort, including negligence. Any action against Anritsu Limited must be brought within one year after the cause of action occurs. Anritsu Limited shall not be liable for any delay in performance due to causes beyond its reasonable control. The warranty provided herein does not cover damages, defects, malfunctions, or service failures caused by the owner's abuse, misuse or negligence acts ; and power failure or surges, fire, flood, accident, actions or third parties, or other events outside reasonable control.

### **Trademark Acknowledgments**

Adobe Acrobat and Acrobat Reader are trademarks of Adobe Systems Incorporated. Microsoft Access, Microsoft Visual Basic, and Microsoft.Net are trademarks of Microsoft Corporation in the United States and other countries.

# Table of Contents

---

## Chapter 1—General Information

- 1-1 About this Manual . . . . . 1-1
  - Comments on this Manual . . . . . 1-1
  - Software Versions . . . . . 1-1
  - Conventions . . . . . 1-1
- 1-2 Product Description . . . . . 1-2

## Chapter 2—Preparation for Use

- 2-1 Operating Environment . . . . . 2-1
- 2-2 Installing PowerMax . . . . . 2-1
- 2-3 GUI Overview . . . . . 2-1
- 2-4 Configuring the Equipment . . . . . 2-2
- 2-5 Resetting the System . . . . . 2-3
- 2-6 Zeroing and Calibrating the Sensor . . . . . 2-3
- 2-7 Setting the Cal Factor . . . . . 2-3

## Chapter 3—Operation Overview

- 3-1 Setting up Measurements . . . . . 3-1
- 3-2 Selecting the Trigger Mechanism . . . . . 3-2
- 3-3 Positioning Measurement Gates . . . . . 3-3
- 3-4 Positioning Markers . . . . . 3-5
- 3-5 Saving and Recalling Settings . . . . . 3-6
- 3-6 Saving Trace Data . . . . . 3-6
- 3-7 Saving the Trace Image . . . . . 3-6
- 3-8 Saving and Recalling Settings . . . . . 3-6

# Chapter 1 — General Information

## 1-1 About this Manual

This manual provides an overview to the PowerMax software (MX249001A) for use with the ML248xB/ML249xA power meter. No prior knowledge of PowerMax is assumed, although a familiarity with the purpose and operation of the ML248xB/ML249xA is required.

The reader is presumed to be familiar with the operation of, and terminology associated with, a Microsoft Windows operating environment.

### Comments on this Manual

Every effort has been made to ensure that this manual is thorough, easy to use, and free from errors. However, to ensure continued improvement, we would welcome your comments on this, or any other Anritsu document.

Please contact us at the address below if you have any comments, good or bad, find any errors or omissions, or have any suggestions on how our documentation could be improved further.

powermeter.support@anritsu.com

Your comments will be logged and reviewed, and whenever possible, will be reflected in a subsequent release of the document.

### Software Versions

This manual provides details of the operation and functionality of the following software versions:

PowerMax: 2.00

### Conventions

The following conventions have been adopted in this manual.

**Table 1-1.** Notation Conventions

Item	Convention
ML248xB	Used to refer jointly to both the ML2487B and ML2488B power meters.
ML249xA	Used to refer jointly to both the ML2495A and ML2496A power meters.
[Set-Up]	Tabbed pages within PowerMax are enclosed in square brackets.
[PowerMax]	The names of windows and dialogs are enclosed in square brackets.
“Channel Mode”	Text appearing within the body of a window or dialog is enclosed in quotation marks.
[Autoscale]	The names of buttons that appear within windows or dialogs are enclosed in square brackets.
[Shift]	The names of keys that appear on the PC keyboard are enclosed by square brackets.
DUT	The device under test is referred to as the DUT throughout this document.

## 1-2 Product Description

PowerMax is a software package that allows the user to control the ML248xB/ML249xA power meter (with firmware v2.31 or greater) from a remote PC. Use of the larger PC monitor offers a number of benefits including more immediately comprehensible setting fields, a larger trace display area, and the ability to capture and save trace and image data.

PowerMax is shipped as standard with all ML248xB/ML249xA power meters purchased, or can be downloaded from the Anritsu web site. An ethernet connection is established between the power meter and the PC and measurement settings and results are then displayed on a Windows based GUI.



**Figure 1-1.** PowerMax Splash Screen

The key features of PowerMax are summarised below.

- Full remote control of the power meter allowing continuous real-time monitoring of measurement traces, print outs, and data archiving for later analysis.
- Familiar Windows based GUI maximizes visibility and operability.
- User information and error messages displayed without blocking the view of the trace or readout.
- Simultaneous display of information for all four gates and markers.
- Measurement settings split into a number of easily navigable tabbed pages.
- All changes made within PowerMax relayed automatically to the instrument.
- Save settings to dedicated location on power meter or to a file for transferal to separate PC.

# Chapter 2 — Preparation for Use

## 2-1 Operating Environment

The following operating environment is required in order to install and run the PowerMax software.

- Intel-based PC with Pentium processor or equivalent.
- Microsoft Windows 2000 or Windows XP operating system.
- English, Chinese, or Japanese language environment.
- CD-ROM drive (if installing PowerMax from the supplied CD).
- 16 MB RAM minimum.

## 2-2 Installing PowerMax

The PowerMax software is supplied on the CD shipped with the power meter or can be downloaded from the Anritsu website. Double click the Setup.exe file and follow the displayed instructions to install PowerMax. By default PowerMax is installed to C:\Program Files\Anritsu.

## 2-3 GUI Overview

The [PowerMax] window comprises of four main areas as identified in the figure below.

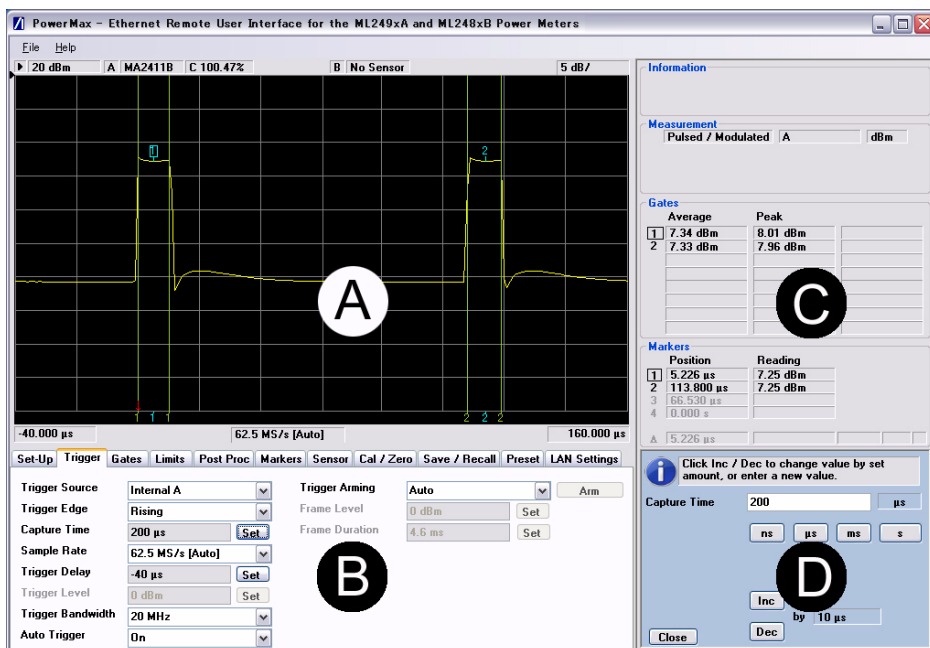


Figure 2-1. [PowerMax] window

- A: The display area

The main display area is used for viewing trace data and displaying gates and markers. This area is an exact enlargement of the display area on the power meter itself. Any changes or updates to the trace or markers are reflected simultaneously on both PowerMax and power meter displays.

- B: The settings area

The setting area is located immediately beneath the display area. For ease of operation, the settings within the hard and soft key menus on the ML248xB/ML249xA itself have been re-arranged into a number of tabbed pages. Although some of the settings have been repositioned, the names of the tabbed pages and the commands found within correlate largely to the hierarchy of the commands on the power meter.

The first six PowerMax tabbed pages [Set-Up], [Trigger], [Gates], [Limits], [Post Proc], and [Markers] correspond with the soft keys and associated settings found within the [Channel] hard key.

The following four tabbed pages correlate to the other four hard keys on the power meter, although as some of the display and configuration settings are not relevant to PowerMax, the [System] hard key has been renamed as [Save/Recall].

Each tabbed page houses a number of associated settings at which the user makes a selection from the drop-down menu or clicks [Set] and enters the required value in the single setting area (D).

- C: The message and results area

The area to the right of the main display area is used for the display of measurement results and marker readings. The upper section of this area is also used for the display of status or error messages.

- D: The single setting area

Several of the tabbed pages include [Set] buttons that, when clicked, display a blue area in the bottom right corner of the interface. The user enters the required value in the entry field (or uses the [Inc] / [Dec] commands), and selects the units of measurement. The space occupied by the single setting area appears gray until one of the [Set] buttons is clicked.

## 2-4 Configuring the Equipment

Follow the procedure below to configure the equipment. Do not connect the DUT to the sensor until instructed.

1. Connect the PC to the ML248xB/ML249xA by means of an Ethernet crossover cable.
2. Turn on the power meter.
3. Go to the Remote menu (press System > Config > Remote) and press [LAN Reset Manual]. This forces the power meter to use the factory default (static) IP address.
4. Go to the identity screen (System > Service > Identity) and confirm that the IP address is 192.168.0.2.
5. Set up the PC's network interface to a static IP address of 192.168.0.1.
6. Start PowerMax and wait for the information to be relayed from the instrument.

7. Click the [LAN Settings] tab and ensure that the IP address for the power meter is set to 192.168.0.2.

<b>Note</b>	The power meter can also be connected to a controlling PC by means of a hub or switch. A crossover Ethernet cable is not required in this case. Refer to the ML248xB/ML249xA Operation Manual for details.
-------------	--

## 2-5 Resetting the System

1. Click the [Preset] tab in Powermax and select “Reset” from the list of presets.
2. Click the [Preset] button to reset the system.

<b>Note</b>	Once PowerMax is in operation, users are recommended to avoid making manual setting changes from the power meter’s front panel.
-------------	---

## 2-6 Zeroing and Calibrating the Sensor

Remove any residual DC offset by zeroing and calibrating the sensor.

1. Connect the sensor cable to input A on the ML248xB/ML249xA and connect the sensor to the calibrator port.
2. Click the PowerMax [Cal/Zero] tab.
3. Click the [Zero/Cal A] button. The sensor is zeroed and the status is indicated at the green progress bar at the bottom of the [Cal/Zero] page.
4. Disconnect the sensor from the calibrator port and connect it to the DUT.
5. Zero again after making sure that RF is not being applied.

## 2-7 Setting the Cal Factor

Follow the procedure below to set the frequency for sensor A.

1. Click the PowerMax [Sensor] tab.
2. Set the “Cal Factor Source” to “Frequency”.
3. Click the [Set] button to the right of the “Frequency” display field.
4. Set the frequency in the blue area that displays in the bottom right of the [PowerMax] window.
5. Click the button for the correct units of measurement and then click [Close]. The specified frequency now displays in the “Frequency” field on the [Sensor tab].



# Chapter 3 — Operation Overview

As explained earlier in this manual, PowerMax is a tool designed to enhance the operability of the power meter rather than the functionality. Although grouped and positioned differently, settings reflect those to be found on the power meter itself and users should refer to the ML248xB/ML249xA Operation Manual for individual setting explanations that will not be repeated in this document

To quickly demonstrate the operation of PowerMax this chapter describes how to make a number of standard measurements on a 1 GHz, 10 dBm signal with a pulse width of 10 microseconds. The purpose of this explanation is merely to familiarize the user with the various setting types within PowerMax and also to demonstrate the ease of operation. Users are recommended to walk themselves through the procedures below until familiar with the program.

## 3-1 Setting up Measurements

1. Start PowerMax and click the [Set-Up] tab to display the setting area shown below. Follow the procedure below to set up the power meter to make average and peak power measurements on a pulsed waveform.

The screenshot shows the [Set-Up] tab of the PowerMax software interface. The tab is highlighted in orange. Below the tab are several other tabs: Trigger, Gates, Limits, Post Proc, Markers, Sensor, Cal / Zero, Save / Recall, Preset, and LAN Settings. The main area contains the following settings:

Channel Mode	Pulsed / Modulated	Averaging	Off	Restart Avg
Measurement	Avg & Peak	Averaging No.	64	Set
Meas Display	Profile	Ref. Level	-24.4 dBm	Set Autoscale
Input Config	A	Scale	0.2 dB/	Set
Units	dBm	Data Hold	Single	Reset
Resolution	n.nn			
Profile Display	Average			
Peaking Indicator	<input type="checkbox"/> Reset	Measurement Hold	<input type="checkbox"/> Rng Hold A	<input type="checkbox"/> B

Figure 3-1. [Set-Up] Tab

2. Set the “Channel Mode” item to “Pulsed / Modulated”.
3. Set the “Measurement” item to “Avg & Peak”.
4. Set the “Meas Display” item to “Profile”
5. Set the “Input Config” item to match the input in use on the power meter.
6. Click the [Autoscale] button that displays on the right of the page.

## 3-2 Selecting the Trigger Mechanism

1. Click the PowerMax [Trigger] tab to display the setting area shown below. Follow the procedure below to set up the power meter to trigger on the pulse's rising edge with a capture time of 200 microseconds and a delay of -40 microseconds.

Set-Up	Trigger	Gates	Limits	Post Proc	Markers	Sensor	Cal / Zero	Save / Recall	Preset	LAN Settings
Trigger Source	Internal A									
Trigger Edge	Rising									
Capture Time	200 $\mu$ s	Set								
Sample Rate	62.5 MS/s [Auto]									
Trigger Delay	-40 $\mu$ s	Set								
Trigger Level	0 dBm	Set								
Trigger Bandwidth	20 MHz									
Auto Trigger	On									
Trigger Arming	Auto								Arm	
Frame Level	0 dBm	Set								
Frame Duration	4.6 ms	Set								

Figure 3-2. [Trigger] Tab

2. Set the "Trigger Source" item to "Internal A".
3. Set the "Trigger Edge" item to "Rising".
4. Set the "Capture time" item to "200" microseconds.
5. Set the "Sample Rate" item to "Auto".
6. Set the "Trigger Delay" item to "-40" microseconds. The trace within PowerMax should now be similar to the one shown below.

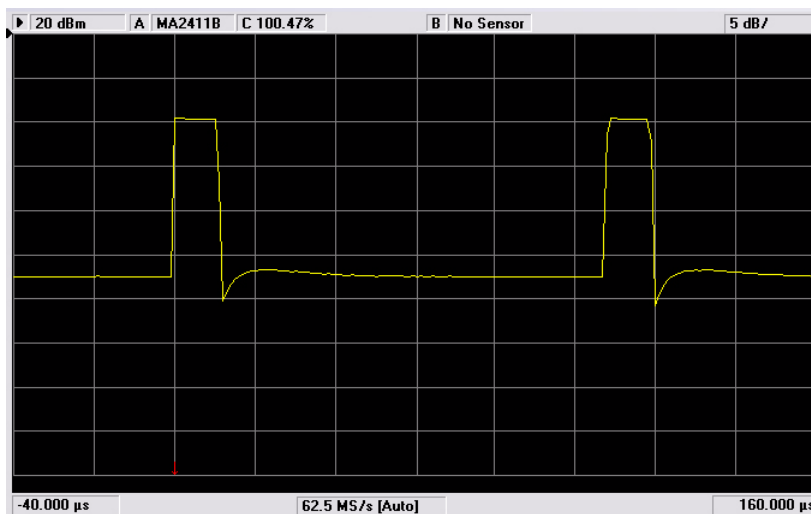


Figure 3-3. Pulsed Waveform with Trigger Delay

### 3-3 Positioning Measurement Gates

1. Click the PowerMax [Gates] tab to display the setting area shown below. Follow the procedure below to position gates on the rising and falling edges of both pulses.

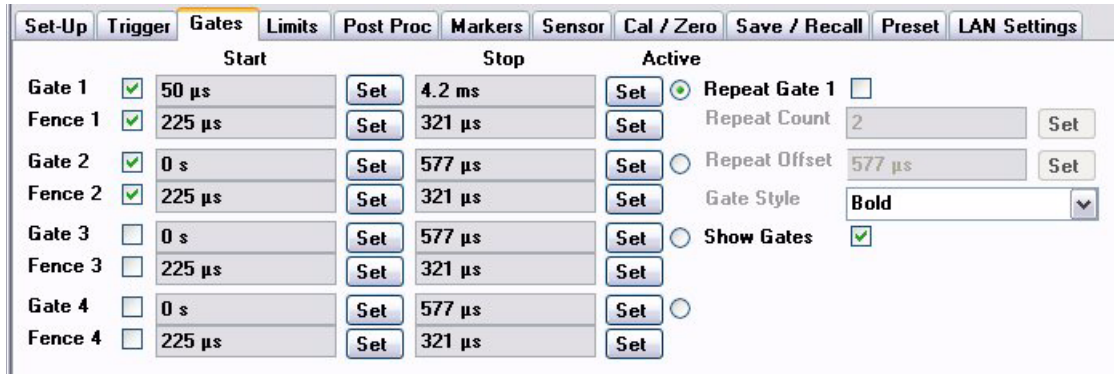


Figure 3-4. [Gates] Tab

2. Select the check box that displays immediately to the right of the “Gate 1” label. The gate appears on the trace when the check box is selected.
3. Position the gates using either of the following techniques:-
  - Position the mouse pointer at the base of the gate on the trace. The pointer changes to a hand icon and the gate can now be dragged to the required position whilst holding down the mouse button.
  - Enter the position manually by clicking the [Set] button to display the blue single setting area at the bottom right of the interface. Enter a value directly into the entry field and click the appropriate units of measurement. Alternatively, use the [Inc] and [Dec] buttons to step to the required value. Click [Exit] once the gate has been positioned.

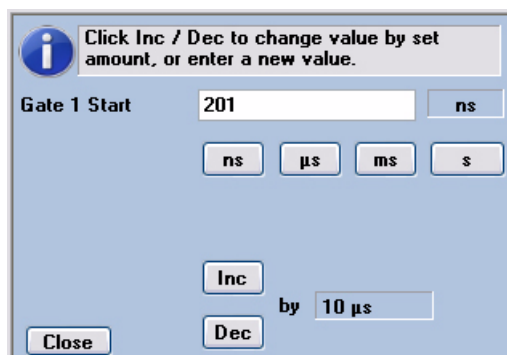


Figure 3-5. Single Setting Display Area

4. Repeat the steps above to position the start and stop gates as shown in the figure below..

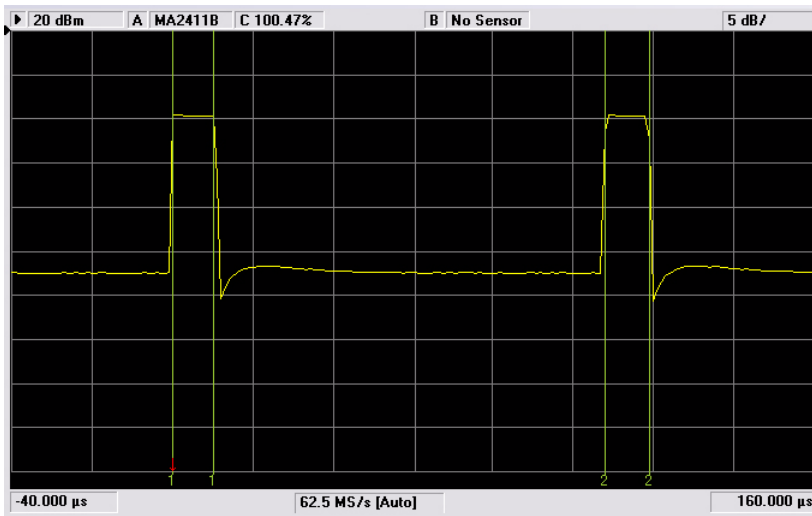


Figure 3-6. Pulsed Waveform with Gates

### 3-4 Positioning Markers

1. Click the PowerMax [Markers] tab to display the setting area shown below. Up to four markers and one delta marker can be displayed on the trace at any time. Follow the procedure below to position markers at the centre points within each pulse.

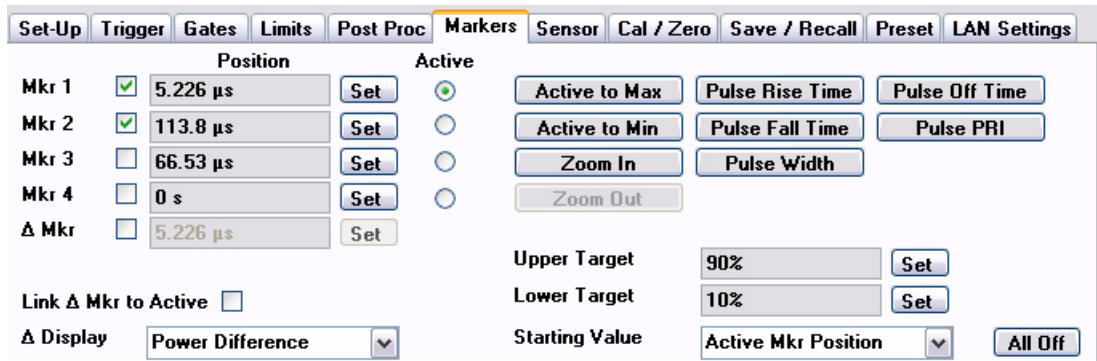


Figure 3-7. [Markers] Tab

2. Select the check box that displays to the right of the marker name to display the marker on the trace.
3. Set the markers at the centre of each pulse. The markers can be positioned by dragging or by clicking [Set] and entering a value in exactly the same way as explained in the previous section on gates.
4. The trace within PowerMax should now appear similar to the one shown below.

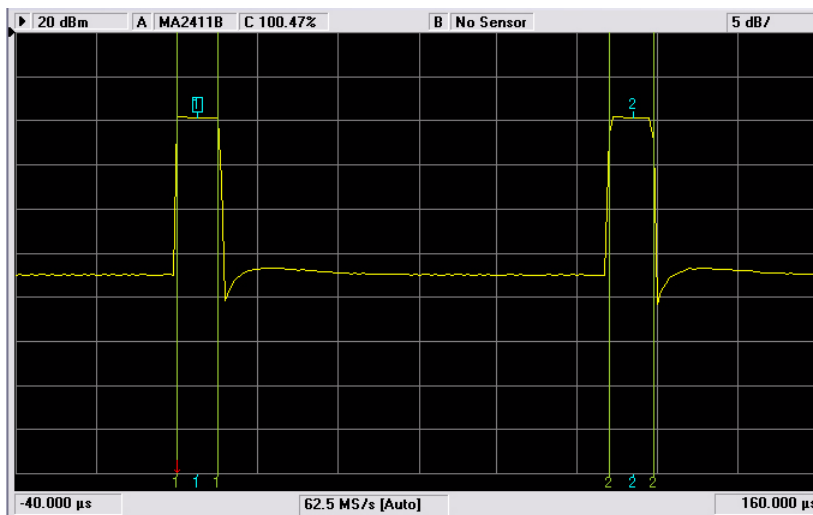


Figure 3-8. Pulsed Waveform with Gates and Markers

## 3-5 Saving and Recalling Settings

1. Click the PowerMax [Save / Recall] tab to display the setting area shown below. Follow the procedure below to save all the settings made over the course of the previous explanations.

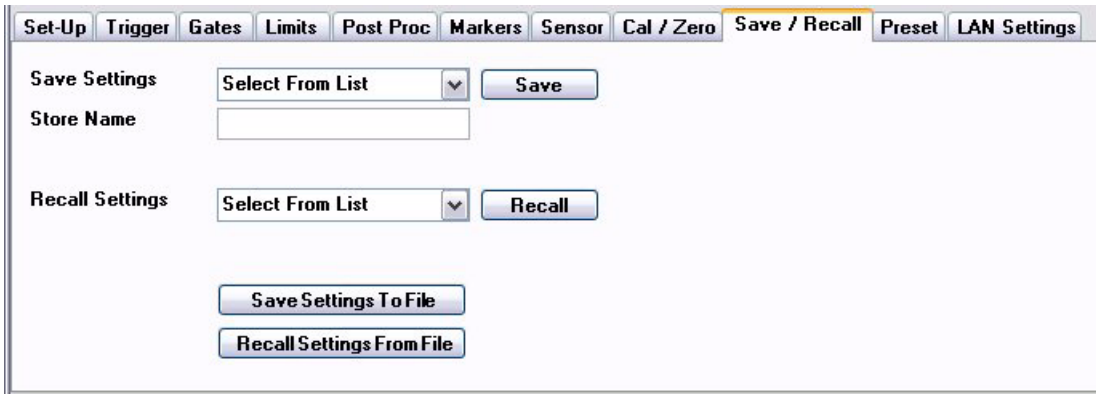


Figure 3-9. [Save / Recall] Tab

2. Open the “Save Settings” drop down list and select a location to which the settings will be saved.
3. Enter a name in the “Store Name” entry field under which the settings will be saved.
4. Click [Save].
5. Recall the settings by simply selecting the specified name from the “Recall Settings” drop down list and clicking [Recall].

## 3-6 Saving Trace Data

1. Select [Save Trace] from the PowerMax [File] menu.
2. Save the trace data to a text file that can then be opened in a spread sheet program such as Microsoft Excel.

## 3-7 Saving the Trace Image

1. Select [Save Image] from the PowerMax [File] menu.
2. Save the trace image to a jpeg file that can then be viewed in any graphics program.

## 3-8 Saving and Recalling Settings

PowerMax settings can be saved to an external file. This file can be transferred to a separate PC and recalled when required.

1. Click the PowerMax [Save / Recall] tab.
2. Click [Save Settings To File] and specify a file name and location in the normal manner.
3. Click [Recall Settings From File] to read the saved settings back into PowerMax at any time.

# Appendix A PC Regional Settings

The PowerMax software is designed to operate on Windows 2000 or XP in an English, Japanese, or Chinese language environment. Performance cannot be guaranteed when installed on any other system.

Operation difficulties may be experienced if PowerMax is operated on a PC running in a language environment, such as Swedish and German, where a comma is used as the decimal symbol (e.g., 3,6), instead of a point (e.g., 3.6).

Follow the appropriate procedure below to change the decimal symbol to a point (.).

## A-1 Windows XP

1. Open the [Control Panel] from the Windows [Start] menu.
2. Open [Regional and Language Options].
3. Click the [Customize...] button.
4. Select the point (.) setting from the "Decimal Symbol" drop-down field.

## A-2 Windows 2000

1. Open the [Control Panel] from the Windows [Start] menu.
2. Open [Regional options].
3. Click the [Numbers] tab.
4. Select the point (.) setting from the "Decimal Symbol" drop-down field.

<p><b>AUSTRALIA</b>  ANRITSU PTY. LTD.  Unit 3, 170 Foster Road  Mt Waverley, VIC 3149  Australia  Telephone: +61-3-9558-8177  Fax: +61-3-9558-8255</p>	<p><b>BRAZIL</b>  ANRITSU ELETRÔNICA LTDA.  Praca Amadeu Amaral, 27 - 1 Andar  01327-010-Paraiso-São Paulo-  Brazil  Telephone: +55-11-3283-2511  Fax: +55-11-3288-6940</p>	<p><b>CANADA</b>  700 Silver Seven Road, Suite 120, Kanata,  ON K2V 1C3,  Canada  Telephone: +1-613-591-2003  Fax: +1-613-591-1006</p>
<p><b>CHINA</b>  ANRITSU BEIJING SERVICE CENTER  Room 1515, Beijing Fortune Building,  No. 5, Dong-San-Huan Bei Road,  Chao-Yang District, Beijing 10004, P.R.  China  Telephone: +86-10-6590-9230  Fax: +86-10-6590-9235</p>	<p><b>FINLAND</b>  Teknobulevardi 3-5,  FI-01530 VANTAA, Finland  Telephone: +358-20-741-8100  Fax: +358-20-741-8111</p>	<p><b>FRANCE</b>  9, Avenue du Québec Z.A. de Courtabœuf  91951 Les Ulis Cedex,  France  Telephone: +33-1-60-92-15-50  Fax: +33-1-64-46-10-65</p>
<p><b>GERMANY</b>  Anritsu GmbH  Nemetschek Haus  Konrad-Zuse-Platz 1  81829 München  Germany  Telephone: +49 (0) 89 442308-0  Fax: +49 (0) 89 442308-55</p>	<p><b>HONG KONG</b>  ANRITSU LIMITED LTD.  Units 4 &amp; 5, 28th Floor, Greenfield Tower,  Concordia Plaza,  No. 1 Science Museum Road,  Tsim Sha Tsui East,  Kowloon, Hong Kong  Telephone: +852-2301-4980  Fax: +852-2301-3545</p>	<p><b>ITALY</b>  ANRITSU Sp.A  Via Elio Vittorini 129,  00144 Roma EUR,  Italy  Telephone: +39-06-509-9711  Fax: +39-06-502-24-25</p>
<p><b>JAPAN</b>  5-1-1 Onna, Atsugi-shi,  Kanagawa 243-8555  Japan  Telephone: +81-46-223-1111  Fax: +81-46-296-1264</p>	<p><b>KOREA</b>  ANRITSU CORPORATION LTD.  8F Hyunjuk Building, 832-41,  Yeoksam Dong,  Kangnam-ku, Seoul, 135-080, Korea  Telephone: +82-2-553-6603  Fax: +82-2-553-6604</p>	<p><b>SINGAPORE</b>  60 Alexandra Terrace, # 02-08  The Comtech (Lobby A)  Singapore 118502  Telephone: +65-6282 2400  Fax: +65-6282 2533</p>
<p><b>SWEDEN</b>  Anritsu AB  Borgafjordsgatan 13, 164 40 KISTA,  Sweden  Telephone: +46-8-534-707-00  Fax: +46-8-534-707-30</p>	<p><b>TAIWAN</b>  ANRITSU CO., LTD.  7F, NO.316, Sec.1 NeiHu Rd., Taipei,  Taiwan, R.O.C  Telephone: +886-2-8751-1816  Fax: +886-2-8751-1817</p>	<p><b>UNITED KINGDOM</b>  Anritsu LTD  200 Capability Green, Luton,  Bedfordshire, LU1 3LU  U.K.  Telephone: +44-1582-433200  Fax: +44-1582-731303</p>
<p><b>UNITED STATES</b>  1155 East Collins Blvd., Richardson, TX  75081,  U.S.A.  Toll Free: 1-800-ANRITSU (267-4878)  Telephone: +1-972-644-1777  Fax: +1-972-671-1877</p>		